

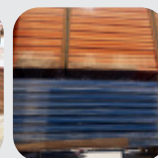
AUTOMATIC HIGH SPEED SIDE SEALING MACHINE



- There is no limit about the length of the packaging products.
- The sealing line can be adjusted in the middle of the product according to what you need.
- Perfect sealing effect is reached.
- The productivity around 55 pcs/minutes depends on the products and parameter setting conditions.
- The conveyor speed is adjustable according to different product needs.
- Punching perforation device can be flexibly adjusted and the pin wheel brush is permanently use.

OVERVIEW:

Especially for large products such as photo frames, furniture, aluminium products, kitchen utensils, bottle beverage etc.



MACHINE CAPACITY ~55 PCS/MIN

| Model No | SP-BJ400 | SP-B500 | SP-B800 | SP-B1100 |
|------------------------------|----------------------------|-----------------------------|-----------------------------|-----------------------------|
| Voltage | 220V / 1PH / 50HZ | 220V / 1PH / 50HZ | 220V / 1PH / 50HZ | 220V / 1PH / 50HZ |
| Power | 3.0KW | 3.0KW | 3.5KW | 4.5KW |
| Cylinder Air Consumption | 80psi, 6kg/cm ² | 80psi, 6kg/cm ² | 80psi, 6kg/cm ² | 80psi, 6kg/cm ² |
| End Sealing Bar | 400mm | 500mm | 800mm | 1100mm |
| Min Packing Size (L x W x H) | 150mmL x 60mmW x 5mmH | 200mmL x 60mmW x 5mmH | 200mmL x 100mmW x 2mmH | 300mmL x 300mmW x 2mmH |
| Max Packing Size (L x W x H) | α mmL x 350mm W x 100mmH | α mmL x 450mm W x 120mmH | α mmL x 650mm W x 120mmH | α mmL x 1000mm W x 120mmH |
| Conveyor Speed (m/min) | 20 m/min | 30 m/min | 30 m/min | 30 m/min |
| Machine Size | 1780mmL x 985mmW x 1550mmH | 1630mmL x 1155mmW x 1590mmH | 1820mmL x 1605mmW x 1668mmH | 2100mmL x 1605mmW x 1800mmH |